

# **NZ Dolphin Underwater & Adventure Club Newsletter June 2021**

**Club Meeting: Wed 9<sup>th</sup> 2021 - Club Rooms : 7:00pm**

**Guest speaker: Sophie Journee on EMR activities update & successes**



**Club's Mail Address:  
14 Gails Drive  
Okura  
RD 2 Albany**



**Club Contacts  
Phone numbers & emails  
Committee listing inside**

## COMMITTEE MEMBERS: 2021/2022

<b>President/Editor</b>	Denis Adams	<b>0278 970 922</b>	da.triden@gmail.com
<b>Vice-President</b>	Chris Nipper	021 991 732	akidna27@gmail.com
<b>Past-President</b>	Peter Howard	0225 194 046	pete.howard@xtra.co.nz
<b>Secretary/Treasurer</b>	Margaret Howard	<b>0274 839 839</b>	marg.howard@xtra.co.nz
<b>Sec/Treasurer backup</b>	Trish Mahon-Adams	0272 715 410	t.triden@gmail.com
<b>Committee</b>	Dave Craig	021 557 588	dave.wave5@gmail.com
	Tom Butler	0278 931 936	trbutler@xtra.co.nz
<b>Web Site</b>	Matt Gouge	0210 777 282	mattgouge@gmail.com
<b>Dive Trips Organiser</b>	Margaret Howard	0274 839 839	marg.howard@xtra.co.nz
<b>Adventure Trips</b>	Martin Saggars	0210 263 7269	saggersmar2@gmail.com
	Kate Ellis	0210 269 7997	kate65nz@orcon.net.nz
<b>Entertainment</b>	Allan Dixon	021 994 593	allanandjilldixon@xtra.co.nz

### Life & Honorary Members

Barry Barnes – Life	Peter & Margaret Howard – Life	Brian Horton – Life
Reg Lawson - Life	Roberto Tonei – Life	Dave Quinlan – Life
Graham Thumah – Honorary	Tony & Jenny Enderby - Honorary	Eileen Slark – Honorary

**Cover Page Photo:- Kayak – Dive - BBQ day on Lake Pupuke by Denis**

### What's on our coming agenda?

**9<sup>th</sup> June – Wednesday – 7.00pm - Dive Club Meeting – Club Rooms – Northcote Road Extension –** Guest Speaker Sophie Journee, Auckland Co-ordinator from EMR – come and learn the achievements and hear some great success stories. This group are introducing and educating thousands of school children and families to learn to love and appreciate our ocean surrounding this wonderful Country.

**19<sup>th</sup> June – Saturday – from 3pm onwards –** Pot Luck Dinner, BBQ afternoon/evening, with Live Music, bring your favourite dish to share. To be held at the Weiti Boating Club – Arkles Bay, Whangaparaoa on the Wade River. Drinks available at the Bar. Bring a gold coin for the raffle. Several Club Members will be playing, Geoff Hammond on piano accordion, Brendon Pooley guitar, Mike Webster on keyboard and guitar, and a few other fun items. If you are a muso, bring your instrument along as well.

This is going to be a great afternoon and evening, mark it in your diary now.

For those who have not been there I am sure you can Google for details. Also room for your camper van to stay the night if you wish, facilities in the Cub Rooms.

**31<sup>st</sup> July – Saturday - Movie Night and Roast Dinner –** Ryder's of Avondale - 177 Riverdale Road, Avondale – 5.30pm onwards – *(formerly Westwind Theatre)* \$35pp includes dinner, ice cream and movie (dinner around 7pm). BYO drinks and nibbles– contact Allan Dixon to book 09 2969182 or 021 994 593 email [allanandjilldixon@xtra.co.nz](mailto:allanandjilldixon@xtra.co.nz)

As a Club we have been enjoying this evening for around 25 years (Tom would know exactly), but we stopped going for a year or so through lack of numbers, get in early to book your place.

## Dive Trips Available

***You will need to contact the shops***

***Upcoming Trips with Performance Dive NZ you may be interested in 2021 - Ph. 489 7782***

**Sun - 9:00am – Local boat dive departing Takapuna or Omaha**

**Sun– 8:00am – Poor Knights Is, Tutukaka 2 Dives**

***Upcoming Trips with Global Dive you may be interested in 2021 - Ph. 920 5200.***

Sat 12<sup>th</sup> Jun – Poor Knights Islands day trip w/Yukon 2 dives

Sat 12<sup>th</sup>- Sun 13<sup>th</sup> Jun – Bay of Islands Weekend trip 4 dives

Sat 26<sup>th</sup> – Sun 27<sup>th</sup> Jun – Anemone Spawning Bay of Islands 4 dives

**Other events & suggestions please contact a committee member or organise it yourself & get the club to make up your numbers. i.e. – Dives, trips NZ & O’Seas, Events, Outings, Tramps, Dinners, Movies, whatever social event tickles your fancy.**

### **Our Club’s Trip Rules (Organiser’s rules apply for overseas trips)**

- A. Bookings allowed on all trips. *Two trips & club membership is a must.*
- B. **A deposit or full payment to be made at time of booking.**
- C. Full payment MUST be paid at least two weeks before departure date.
- D. Trip Organiser to handle trip & bookings, & Treasurer to handle finances. Cancellations due to weather will be refunded in full, or transferred to another trip.
- E. Members cancelling for any reason will lose full monies unless they find a replacement for their position on the trip.
- F. The trips Organiser will determine if there are enough people to run a trip & if not will notify cancellation two weeks prior to departure. **Non - financial members will be charged an extra \$10 on trips.**

**Membership: Single – \$40 Family - \$50.00**

**Now due for all members**

see Margaret or Trish next meeting or do it online.

**Club’s Internet bank account is 06 0122 0074227 00 & don’t forget to put in your name  
Club Membership also includes Affiliation to the New Zealand Underwater Association**



Kayakers heading off around the lake



Preparing for the dive assisted by Margaret



Dive completed with swans checking the divers out.

## Diver in Auckland uses high-tech glove to move underwater robot in Croatia

Michael Daly 11:43, May 21

### *The Biomimetics Laboratory*

A diver in Auckland has been able to send instructions to an underwater robot in Croatia using a high-tech glove. The dive glove, developed by the University of Auckland's Biomimetics Laboratory, is made with integrated wearable sensors and electronics.

A diver in Auckland has made hand gestures while wearing a high-tech glove that moved an underwater robot in Croatia.

The dive glove, developed by a University of Auckland research institute, is made with integrated wearable sensors and electronics.

The theory is that a diver makes gestures with the gloved hand, and those gestures are recognised in real-time by a machine learning algorithm. Then the commands or messages are sent acoustically through the water to a buddy diver or robot.



### *The Biomimetics Laboratory*

The work of the high-tech glove is aimed at improving diver safety.

The glove was developed by the Biomimetics Laboratory at the university's Auckland Bioengineering Institute, using motion capture sensors made by lab spin-out StretchSense.

Initially, the plan was to take the glove for testing at the Adriatic Sea coast in Croatia, to see how well it could communicate with a Croatian-developed autonomous underwater vehicle, University of Auckland said.

But Covid-19 travel restrictions stymied those plans. Instead, last month the glove was tested at indoor pools in Auckland and Croatia.

### *The Biomimetics Laboratory*

Hand gestures made by a diver in Auckland moved an underwater robot in Croatia

Acoustic signals, sent when the diver in the Auckland pool made hand gestures while wearing the glove, were detected by a sonar receiver at poolside and transmitted to a server in Croatia. The signal was then converted back to sound transmitted to the AUV in the Croatian pool.



The robot on the other side of the world moved in real-time in response to the gestures sent by the diver, Biomimetics Lab head Professor Iain Anderson said. It was hoped to be able to be able to develop the project further in Croatia during 2021.

The research - carried out in collaboration with the University of Zagreb, and funded by the US Office of Naval Research - was aimed at improving diver safety, Anderson said.

"Our research will improve communication diver-to-diver and diver-to-machine in a world where you often can't see more than a couple of metres."

## Taranaki recreational diver says rock lobster stocks 'hammered' by commercial boats



Mike Watson 05:00, Mar 29 2021

*ANDY JACKSON/Stuff*

A commercial rock lobster boat seen fishing between Tokatapu and Waikaranga (also known as Seal Rocks) off New Plymouth during the summer. The boat is operating within the rules. Tensions are running high among recreational fishermen and commercial operators in Taranaki over rock lobster numbers along the coast.

One local fisherman has accused commercial operators of “hammering” stocks.

But an industry representative has hit back, saying his members' boats were being unfairly targeted and commercial lobster pots had even been cut free, at a cost of thousands of dollars to replace.

Oakura resident and diver Wayne Looker said lobster stocks had plummeted in the past three years.

“Three boats have been coming in real close and hammering the reefs,” he said.

“They are coming here and destroying our crayfish.”

Looker said an increase in recreational fishing was not the cause of the decline, and he wanted the Ministry for Primary Industry to monitor lobster populations.

But Larnce Wichman, area spokesman for the CRA 9 Rock Lobster Industry Association (CRAMAC 9) said the boats Looker criticised were legally operating under quota.

Commercial boats were not depleting the lobster stock, and the fishing was consistent and sustainable, with fewer vessels landing the same quantities each season, he said.

Rock lobster photographed in the Tapuae Marine Reserve, off New Plymouth.



“In fact the lobster grounds are healthy based on their, and the other commercial vessels’ catch data along the coast.”

Lobster stocks fluctuate seasonally, and commercial quota was usually filled before the busy summer months favoured by recreational fishermen, he said.

Wichman said the issue was historical and the latest accusations were based on emotion.

“It’s a blame game and there are no solutions.”

Wichman said one boat, Te Kahurangi, owned by Waikawa Fishing, had been fishing off Taranaki since 1984.

The company would have left the area if the fish stocks were depleted, he said.

*Scott Hammond/Stuff*

CRA9 area spokesman Larnce Wichman, of Kaikoura, says commercial rock lobster boats are legally allowed to fish for quota off the Taranaki coast.

“It costs a lot of money to run a vessel, and they have to harvest efficiently to make a living.”

The company had 20 lobster pots cut loose this season, he said.

“That’s \$20,000 lost. It is theft and destruction of private property.”

Wichman said the effect of Covid-19 pandemic had delayed fishing, with the boats two months late arriving in Taranaki to harvest the CRA9 rock lobster quota.

Taranaki CRA9 rock lobster fishery, between Patēa and Kawhia, is a shared between commercial and recreational fishermen, he said.



A 1.5 Nautical mile to 2Nm exclusion zone around the Cape Egmont Boat Club ramp operated for four months during the year.

Cape Egmont Boat Club commodore Richard van der Fits said the agreement was being honoured by both commercial and recreational fishers.

He said lobster numbers and fish size had reduced.

“You see more smaller ones now than the big crays.

“Our biggest concern is ending up with no crayfish at all, like other areas on the east coast.”

Only eight commercial boats reported catches from the full CRA9 area, between the Kaipara Harbour and Bruce Bay, Westland, in the 2019-2020 season, the NZ Rock Lobster Industry Council reported.

MPI Fisheries acting regional manager Western North Island fish compliance Jason Howat said, in a statement, there had been no evidence found of non-compliance by rock lobster fishers exceeding catch limits.

Howat said MPI receives calls from time to time from people in the area concerned about commercial rock lobster fishing operations off the Taranaki coast in the CRA9 area.

“We take all complaints seriously and investigate them,” he said.

### **Upper Hutt diver jailed for taking 50 pāua from Wellington marine reserve**

Brittany Keogh 16:28, Feb 24 2021



*Robyn Edie*

Taking pāua from a marine reserve has landed an Upper Hutt man behind bars. (File photo)

Taking 50 pāua from a marine reserve has resulted in jail time for an Upper Hutt man.

Carl Patterson was sentenced to two months’ imprisonment on Wednesday at Hutt Valley District Court after being convicted of one charge of obstruction under the Fisheries Act 1996 and another charge under the Marine

Reserves Act 1971, for taking pāua from a marine reserve without lawful authority.

The charges related to a diving trip the 31-year-old made in the Taputeranga Marine Reserve, on Wellington’s south coast, on July 28, 2019.



*ROBERT KITCHIN/STUFF*

Green Party co-leader James Shaw pictured at the Taputeranga Marine Reserve on the south coast of Wellington in 2020 while advocating for more marine reserves in New Zealand. (File photo).

The court heard that when a member of the public approached Patterson after he got out of the water, he dropped his catch bag and left in his car.

A Department of Conservation (DOC) officer later found 50 pāua in the bag.

After the case was heard in court, Mike Green, Ministry for Primary Industries (MPI) lower North Island regional manager of fisheries compliance, said Patterson flouted the rules that were in place to protect fish stocks and the environment.

Fishing and collecting shellfish from marine reserves is banned, unless scientists are conducting research or monitoring, for which they need a permit.



*Robyn Edie*

It is illegal to take shell fish, such as pāua, from marine reserves

DOC marine reserve manager Leon Berard said it was in the interest of divers to respect marine reserves and report illegal activity.

Patterson will serve the sentence imposed for taking the pāua at the same time as an 18-month sentence he is serving on unrelated charges.

- *Anyone who suspects someone of illegal fishing can report the matter to MPI by calling 0800 4 Poacher (0800 47 62 24).*





# Do you know your marine pests?

The dive spots, idyllic bays and pristine coastlines we know and love as boaties could change for the worse if marine pests get to them. Here is what to look out for... and why.

## MEDITERRANEAN FANWORM

*Sabella spallanzanii*

With an ability to pack in 1,000 individuals per square meter, Mediterranean fanworm makes it difficult for other species in the vicinity to survive. Imagine it doing that in some of our pristine dive spots. It filters large volumes of water, feeding on nutrients and plankton, including the larvae of our much loved recreational fish species. Large numbers attached to your hull could be costing you a whole heap more in fuel too.



## PYURA SEA SQUIRT

*Pyura doppelganger*

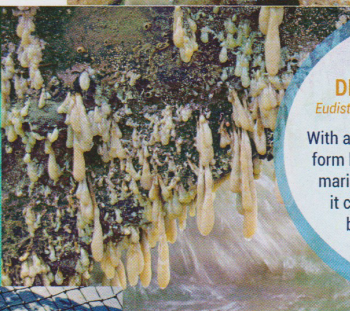
Do your kids love exploring rock pools? Then be cautious about this aggressive competitor that has the potential, in the right conditions, to alter our precious intertidal communities in a significant way - it could even suffocate our beloved green-lipped mussel beds. Currently only found on the West Coast of the Far North. We don't want it spreading further.



## AUSTRALIAN DROPLET TUNICATE

*Eudistoma elongatum*

With a slimy snot-like appearance this species can form big colonies on rocks, aquaculture equipment and marine structures. In its a free-swimming larval stage it can spread far and wide. It dies-back over winter but in summer it leaves no space for native species and changes the beautiful sights of our local beaches.



## JAPANESE MANTIS SHRIMP

*Oratosquilla oratoria*

An aggressive competitor with a dangerous but impressive 'karate chop' ability to stun prey. It lives in burrows in the sand and mud, causing damage and making it hard to trap. In large numbers it leaves no space or food for other native crab and shrimp species.



## CLUBBED TUNICATE

*Styela clava*

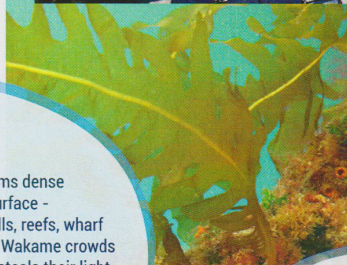
The clubbed tunicate prefers to grow on marine structures and boat hulls, affecting your boat's performance and hitchhiking to other places. It is disliked by the aquaculture industry because it grows in large densities on oyster and mussel lines, suffocating their shellfish, competing for space and food and adding to processing costs.



## WAKAME

*Undaria pinnatifida*

A fast grower that forms dense colonies on any hard surface - including your boat, shells, reefs, wharf piles and mooring lines. Wakame crowds out native species and steals their light and space. This could mean our favourite dive spots are never to be the same again.



## ASIAN PADDLE CRAB

*Charybdis japonica*

If you see an Asian paddle crab on your travels, you are unlikely to see many other species close by. It is aggressive and quickly out competes our native paddle crabs for space and food. With a vicious bite when disturbed, the adults are strong swimmers and can spread attached to fouling on a boats hull, or as larvae in sea chests or ballast water where they can live for up to a month.



In New Zealand most regions have marine biosecurity rules and requirements for all visiting boats. Protect the coastlines we love... clean your boat and check it for marine pests.

Also check out [www.marinepests.nz](http://www.marinepests.nz) for ideas, advice and rules about marine biosecurity for boaties.

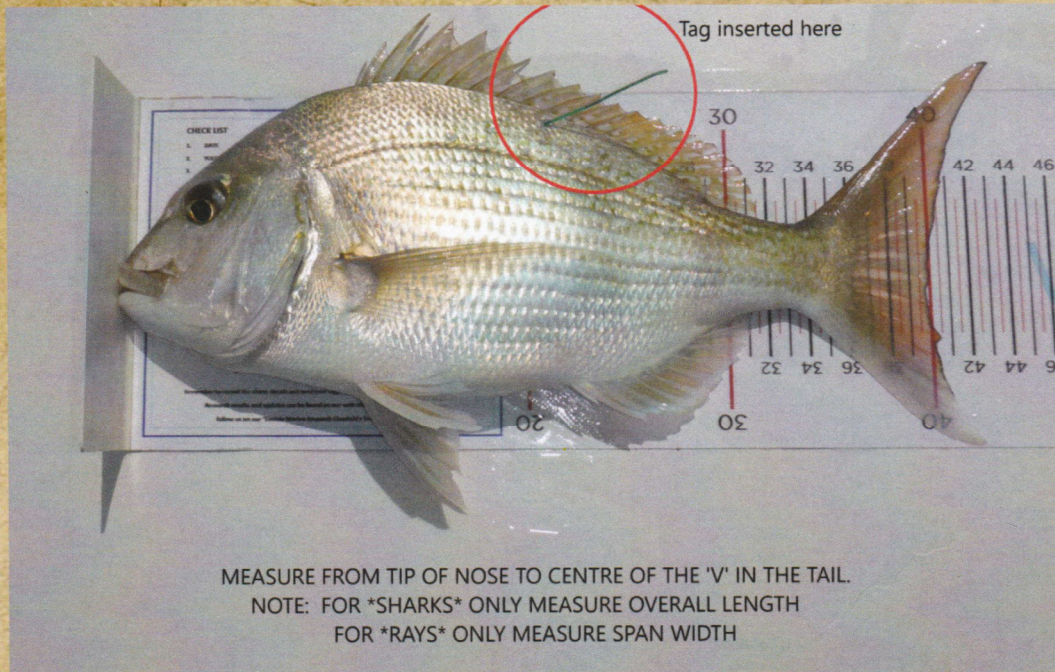
[marinepests.nz](http://marinepests.nz)

\*\**Sabella* is a notifiable organism. If you spot *Sabella*, or anything else unusual, take a sample or photo and report it to the Marine Biosecurity Hotline 0800 809 966.

Thank you to Auckland Council, NIWA, Department of Conservation and Bay of Plenty Council for use of these images.

# WANTED

## REPORT TAGGED FISH RECAPTURES



\* Tag serial number \* Length Measurement \* Catch Location

It will be your choice to keep your catch or release it again with the tag attached. Either way you will be helping to support marine research.

# REWARD

Sponsors prizes will be awarded to fishers for additional recapture information completed online at <https://tindaleresearch.org.nz>

To find out more contact...



**TINDALE  
MARINE RESEARCH  
CHARITABLE TRUST**  
*Inshore Fish Tagging Program*

Email [tindaleresearch@xtra.co.nz](mailto:tindaleresearch@xtra.co.nz)  
Phone 027 476 0687  
PO Box 278 Silverdale 0944, Auckland, New Zealand  
Follow us on **facebook**  
[www.tindaleresearch.org.nz](http://www.tindaleresearch.org.nz)



**PERFORMANCE**  
N Z Ltd *Diver*

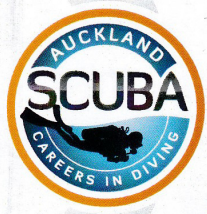
John Haynes

72 Barrys Point Road, Takapuna  
Auckland, New Zealand  
Phone: 64-9-489-7782 Fax: 64-9-489-7783  
Email: sales@performance-diver.co.nz  
Website: www.performance-diver.co.nz

**North Shore Scuba Centre**  
**airtec** Air Technology Limited  
HIGH PRESSURE COMPRESSOR SPECIALISTS

**HASAN SOYKAN**  
Dive Shop Manager

5/20 Constellation Drive, Mairangi Bay, Auckland, New Zealand  
P.O. Box 305 065, Triton Plaza, Auckland 0757, New Zealand  
Tel: 09 478 6220, Fax: 09 478 6221, email: hasan@airtec.co.nz  
website: www.divecompressors.co.nz



**Thomas Marsters**  
Instructor


2/ 49 Arrenway Drive  
Albany, Auckland  
T: 09 478 2814 M: 021 135 8628  
E: info@aucklandscuba.co.nz

[www.aucklandscuba.co.nz](http://www.aucklandscuba.co.nz)

**GLOBALDIVE**  
Dive Training, Equipment and Travel

**Andrew Simpson**  
Manager

6/1 Westhaven Drive  
Westhaven, Auckland  
Aotearoa, New Zealand  
ph (09) 920 5200  
fx (09) 360 8321  
[www.globaldive.net](http://www.globaldive.net)



**SEA TECH** SEA TECH Ltd  
publishers of

The Pacific's Most Informative Dive Magazines



**DIVE NEW ZEALAND**  
**DIVE PACIFIC**

**Dave Moran**  
Editor and Managing Director

Ph: +64 9 521 0684  
Mob 0274 784 900  
Fax +64 9 521 3675  
PO Box 42 020, Orakei,  
Auckland, New Zealand 1745  
davem@DiveNewZealand.co.nz  
[www.DiveNewZealand.com](http://www.DiveNewZealand.com)  
[www.Dive-Pacific.com](http://www.Dive-Pacific.com)

Find us on facebook | Like us on LinkedIn

**Jackson Shields**



6 Arrenway Drive Albany Auckland New Zealand  
P: (09) 479 4232 M: 021 2016525  
E: jackson@wetter.co.nz



**MIKE SMITH**  
MANAGING DIRECTOR

mob 021 778 633  
email - mike@oceanhunter.co.nz  
100 Gaunt Street Westhaven Auckland  
09 377 0896 - PO Box 46 Greenhithe 0756  
[www.oceanhunter.co.nz](http://www.oceanhunter.co.nz)

**OCEANHUNTER™** ruku blades.nz  
New Zealand's Spearfishing and Freediving Specialists *MORAY*

**Dive Centre LTD**  
scuba.co.nz



**Malcolm Kidd**  
PADI Instructor 452110

- NZ's longest running scuba store (since 1972)
- NZ's widest range of Scuba, Snorkeling, & Swim gear
- NZ's highest quality PADI Scuba Courses
- NZ's most trusted dive professionals



**LEGASEA**  
FISH FOR THE PEOPLE

Scott Macindoe  
LegaSea Support Crew

scott@legasea.co.nz  
021 622 463

0800 LEGASEA (534 273) [www.legasea.co.nz](http://www.legasea.co.nz)



**Experiencing Marine Reserves**

Lorna Hefford  
Auckland Regional Coordinator

3/31 Ferndale Road,  
Mount Wellington, Auckland  
[www.emr.org.nz](http://www.emr.org.nz)

02102732339  
[auckland@emr.org.nz](mailto:auckland@emr.org.nz)

**Stay Safe All - remember the rules & where you are in NZ, they vary.**

**PS: Anyone got a recent dive report/story to tell? Please forward to me. Denis**